

ZONE	REV	DESCRIPTION	DATE	APPROVED

EXPLANATION OF GPR SURVEY RESULTS

Shows Interpreted Alignment of Radar Reflection Patterns Indicating Evidence of Subsurface Lines. Lines are Dashed Where Interpretation is Less Certain.

Depth Below Ground Surface (BGS) of Lines is Estimated at Various Points. Circled Points Indicate Where Reflection Patterns Were Detected from Crossing Linear Subsurface Objects Such as Pipelines.

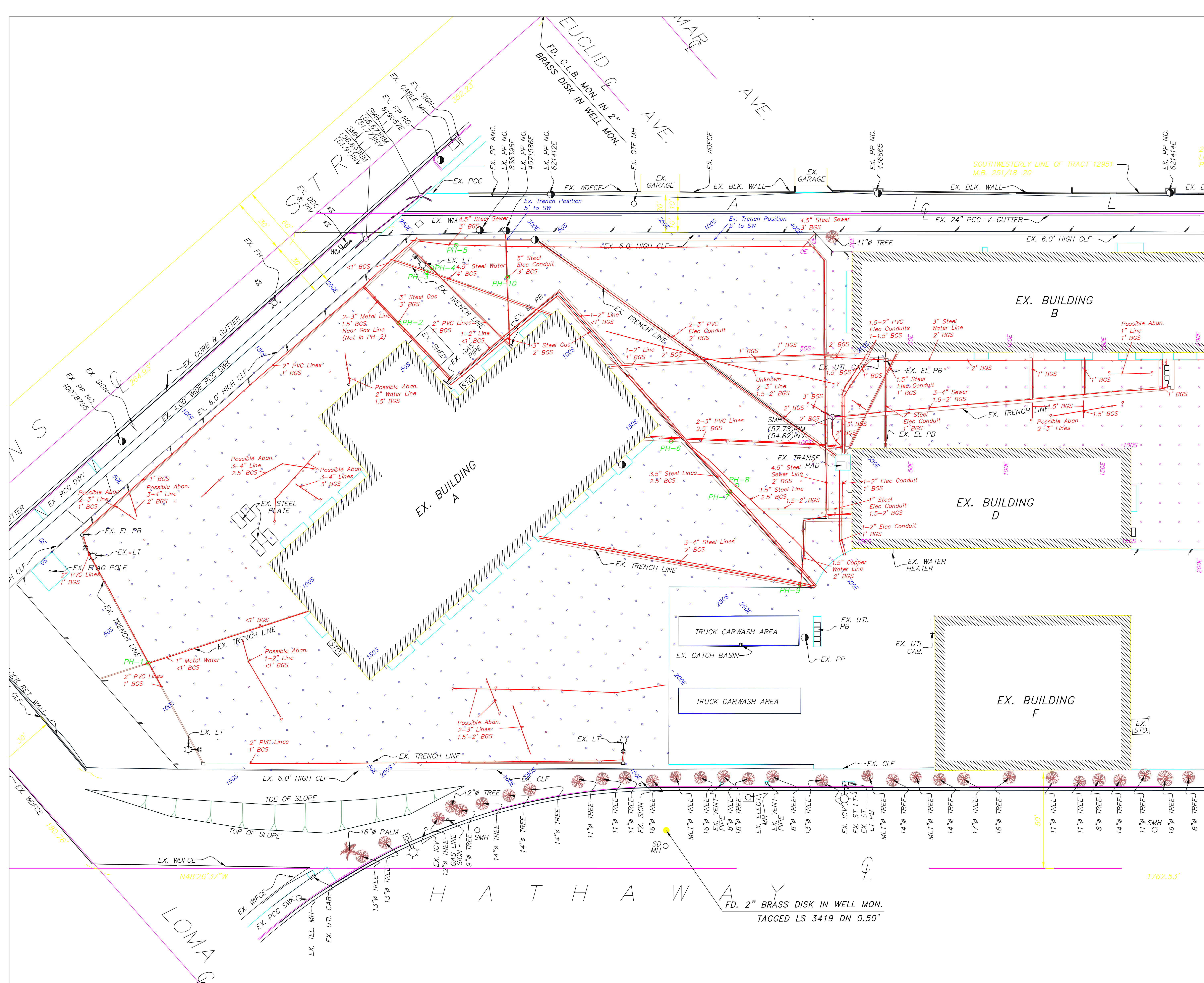
The Approximate Outside Diameter and Type of Subsurface Line are Also Estimated. This Information is Based on Potholing Results and Observations of the Utility Lines Emerging from the Ground Near Building Walls.

POTHOLE INFORMATION

Shows Locations of Limited Excavation Areas Where a Vacuum Air Knife was used to Expose Subsurface Lines for Direct Observations.

Pothole Observations:

- PH-1 Three Lines:
2" and 1.5" PVC Lines, Orientated North-South, 10" BGS.
1" Metal Line, Orientated East-West, 6" Below Ground Surface (BGS).
- PH-2 One Line:
3" Steel Gas Line, Orientated North-South, 36" BGS.
- PH-3 One Line:
4.5" Steel Water Line, Orientated North-South, 48" BGS.
- PH-4 Two Lines:
2" and 1.5" PVC Elec Lines, Orientated North-South, 12" BGS.
- PH-5 One Line:
4.5" Steel Sewer Line, Orientated NW-SE, 39" BGS.
- PH-6 Two Lines:
2" and 3" PVC Lines, Orientated NW-SE, 33" BGS.
- PH-7 Two Lines:
3.5" Steel Lines, Orientated North-South, 28" BGS.
- PH-8 One Line:
1.5" Steel Line, Orientated North-South, 30" BGS.
- PH-9 Three Lines:
3" and 4" Steel Lines, Orientated NW-SE, 25" BGS.
1.5" Copper Line, Orientated NE-SW, 24" BGS.
- PH-10 One Line:
5" Steel Elec Conduit, Orientated NE-SW, 41" BGS.
Possible Second Line Beneath.



GROUND-PENETRATING RADAR INVESTIGATION OF SUBSURFACE UTILITIES AND PIPELINES

Prepared By: ADVANCED GEOSCIENCE, INC. 346 Tejon Place Palos Verdes Estates, CA Tele (310) 378-7480	Site Plan California Army National Guard Long Beach CSMS Facility Long Beach, California
March, 2008	SCALE 1" = 20'
	SHEET 1 of 2